

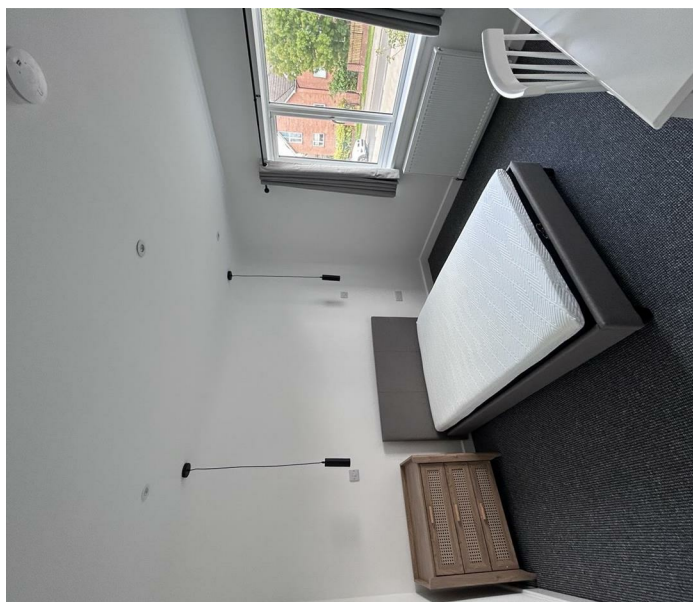
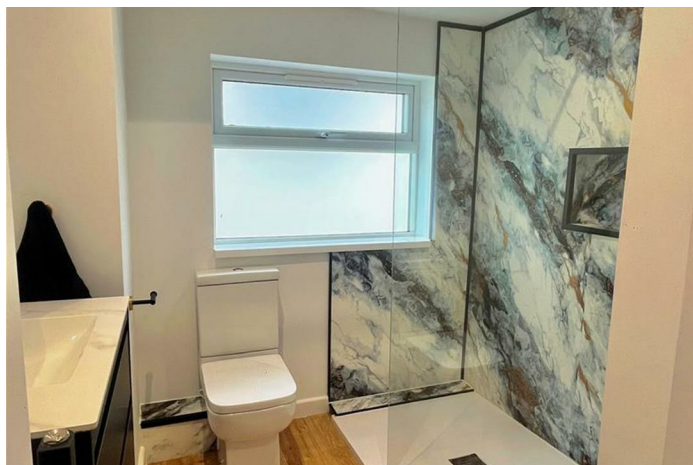


Plains Road , Nottingham, NG3 5QT

- ROOM TO RENT
- FULLY FURNISHED
- FAST BROADBAND
- BILLS ALL INCLUSIVE
- MAPPERLEY PLAINS
- CLOSE TO SHOPS



Local Authority
Council Tax Band
EPC Rating **D**



Burton Joyce Office
111 Church Road, Burton Joyce,
Nottingham, NG14 5DJ

Contact
0115 855 66 22
lettings@johnsonsandpartners.co.uk
www.johnsonsandpartners.co.uk

Agents Note: Whilst every care has been taken to prepare these particulars, they are for guidance purposes only. All measurements are approximate and for general guidance purposes only and whilst every care has been taken to ensure accuracy, they should not be relied upon and potential buyers/tenants are advised to recheck the measurements.